

Quality since 1946 -
V-belts for every application

Your requirements is our benchmark



Our customers see our innovative manufacturing methods with over sixty-five years of experience in the production of V-belts as the guarantors of constant quality. No matter what you are planning, with our wide range of belts we will always be able to offer you the perfect solution.

The most stringent quality controls and the latest production technology ensures that our customers are supplied with high standard products all over the world.

An of course we are not just resting on our laurels. Our specialists constantly working on developing new products to meet the increasing needs of the market and extending the present range that SWR offers.

The world is constantly changing, and SWR intends to keep ahead of the competition in future as well. We feel we owe this much to you, our customers.



Delivery program wrapped V-belts

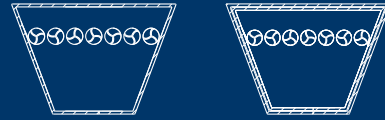
Wedge V-belts DIN 7753/1 SPZ, SPA, SPB, SPC



SPZ, SPA, SPB, SPC

from 562 - 15.000 mm Ld

LG coupling belts 3L, 4L, 5L



3L, 4L, 5L

from 330 - 3.937 mm La

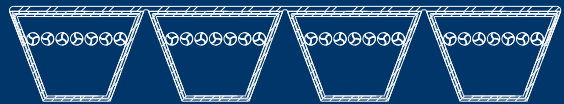
Wedge V-belts RMA/MPTA 3V, 5V, 8V



3V, 5V, 8V

from 381 - 14.224 mm La

Banded V-belts



SPZ, SPA, SPB, SPC

from 1.100 - 14.224 mm Ld

3V, 5V, 8V

from 1.100 - 15.240 mm La

A, B, C, D

from 1.100 - 14.224 Li

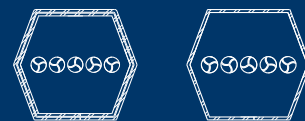
Classical V-belts DIN 2215



Z, A, B, C, D, E,

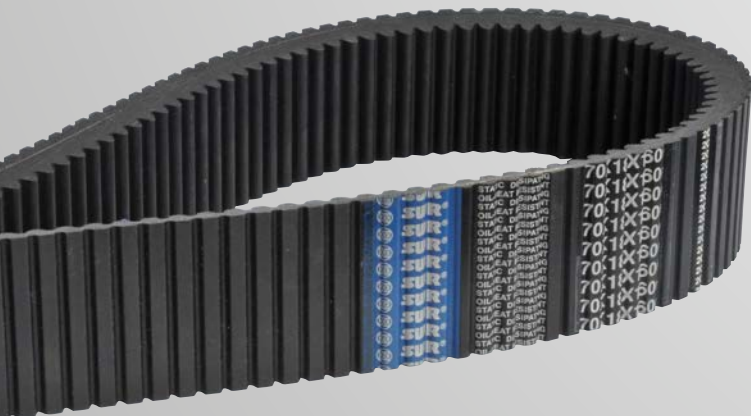
from 381 - 15.240 mm Li

Double V-belts



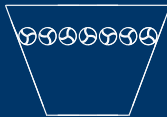
AA, BB, CC

from 889 - 15.240 mm Le



Delivery program raw-edge cogged V-belts

Wedge V-belts



XPZ, XPA, XPB, XPC

from 557 - 2.540 mm Ld

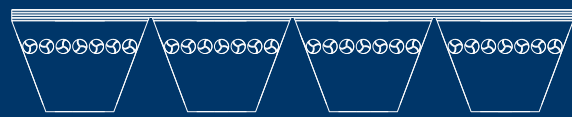
from 2.540 - 7.620 mm Ld

RMA/MPTA, 3VX, 5VX

from 557 - 2.540 mm Ld

from 2.540 - 5.000 mm Ld

Banded V-belts



XPZ, XPA, XPB, XPC

from 900 - 2.540 mm Ld

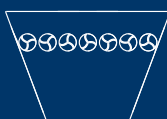
from 2.540 - 7.620 mm Ld

3VX, 5VX

from 900 - 2.540 mm Ld

from 2.540 - 7.620 mm Ld

Classical V-belts

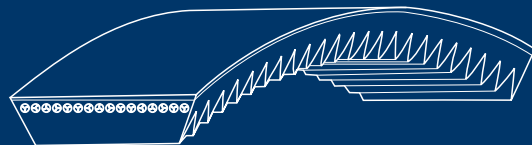


ZX, AX, BX, CX

from 557 - 2.540 mm Ld

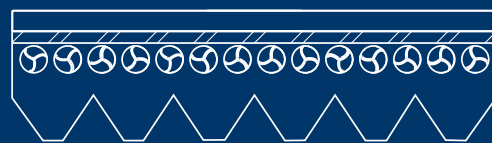
from 2.540 - 7.620 mm Ld

Variable speed-belts



from 450 - 3.550 mm Ld

Multi ribbed-belts



PJ, PK, PL, PM (on request)

from 635 - 12.200 mm La

Further services



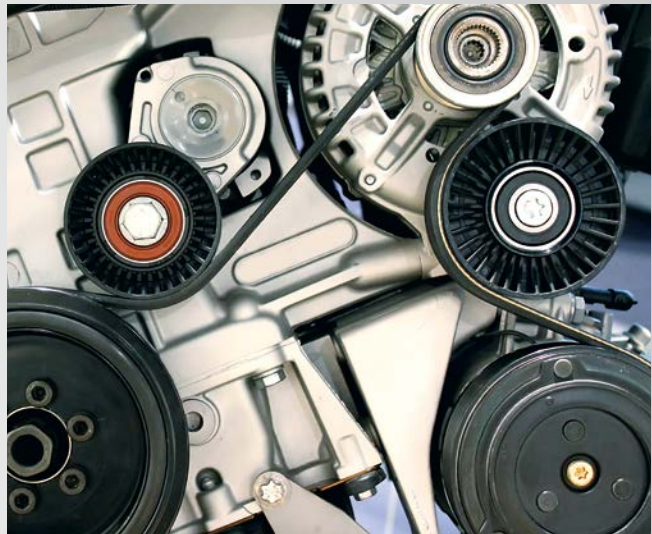
In addition to the V-belts listed, SWR also manufactures a wide range of flat belting, double V-belts, and poly-V-belts. We will be pleased to give you further information.

We can also deliver special designs to meet your particular needs. SWR has a large number of special designs in its programme, for example V-belts with profiled liners, special V-belts for the foodstuff industry, and designs with reinforcing aramide cords.

SWR V-belts are suitable without restrictions for use in tropical regions, and oil- and heat-resistant with restrictions up to 120° C. More detailed specifications available on request.

All SWR V-belts can be grouped individually into matched sets. All products are electrically conductive (anti-static) to DIN ISO 1813.

With our good intentions



A good product alone is still no guarantee for sustained success in the market. As well as an exciting idea, plenty of experience with good implementation skills, responsible handling and forward thinking play a central role. In the face of dwindling resources worldwide, it is even more important to keep a watchful eye on our environment.

SWR has succeeded in putting these claims into practice and has committed itself to the protection of the environment side by side with the manufacture of high-quality products.

SWR is one of the worlds first manufacturers of belting and V-belts whose environmental performance has been certified with the Green Dove, the leading international standard in environmental protection, in accordance with DIN ISO 14001.

Together with its earlier certification under DIN ISO 9002 in 1994, the company has provided impressive proof that a practical combination of environmental awareness and quality management can be successful.

SWR customers have recognised the necessity of these measures and lend their support to the SWR idea of resource-efficient product optimisation.

Their concern and support is appreciated.





If you have any questions,
please do not hesitate to contact us.



SWR Europe - van Dinther Antriebstechnik GmbH
Engelbertstr. 17-21
45892 Gelsenkirchen / Germany
Tel.: +49 (0)209 177 554 20
Email: info@swr-europe.de
Web: www.swr-europe.de